

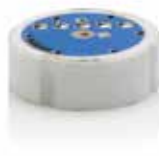


PRESSURE SENSORS

Product Range



▶ CPS 1184



▶ CPS 2184



▶ SPS 1000 Z



▶ SPS 3003

EN

LEADING IN SENSORS

metallux.de

METALLUX – PRESSURE SENSORS



CPS 1184

PRESSURE SENSOR MONOLITH CERAMIC



Technology	Dimensions	Supply voltage	Output signal
Thick-film on ceramic	Ø 18 x 6.35 mm	3 – 30 V	1.5 – 5.3 mV/V

Pressure range p_n	Burst pressure	Pressure mode	Temperature range
1.6 – 600 bar	$1.5 \times p_n - 2.5 \times p_n$	Gauge	Operating temperature: -40/+150 °C, compensated: +20/+85 °C

Electrical connections: solder pads (pitch, 1.27 mm, 2.54 mm), solder pins, flex
Special features: high chemical resistance, high long-term stability

CPS 1184 Z

PRESSURE SENSOR MONOLITH CERAMIC



Technology	Dimensions	Supply voltage	Output signal
Thick-film on ceramic	Ø 18 mm x max. 12 mm without plug	5 V	0.5 – 4.5 V (ratiometric) 4 – 20 mA

Pressure range p_n	Burst pressure	Pressure mode	Temperature range
1.6 – 600 bar	$1.5 \times p_n - 2.5 \times p_n$	Gauge	Operating temperature: -40/+150 °C, compensated: +20/+85 °C

Electrical connections: solder pads, plug (JST)
Special features: high chemical resistance, high long-term stability

CPS 2184

PRESSURE SENSOR FLUSH MEMBRANE CERAMIC



Technology	Dimensions	Supply voltage	Output signal
Thick-film on ceramic	Ø 18 mm x max. 7.6 mm without pins	3 – 30 V	1.5 – 6.0 mV/V

Pressure range p_n	Burst pressure	Pressure mode	Temperature range
0.5 – 600 bar	$1.5 \times p_n - 2.5 \times p_n$	Gauge (0.5 – 50 bar), absolute (1 – 50 bar), sealed gauge (> 100 bar)	Operating temperature: -40/+125 °C, compensated: +20/+85 °C

Electrical connections: solder pads, solder pins, flex
Special features: high chemical resistance, flush membrane, high long-term stability

CPS 2184 Z

PRESSURE SENSOR FLUSH MEMBRANE CERAMIC



Technology	Dimensions	Supply voltage	Output signal
Thick-film on ceramic	Ø 18 mm x max. 12 mm without plug	5 V	0.5 – 4.5 V (ratiometric) 4 – 20 mA

Pressure range p_n	Burst pressure	Pressure mode	Temperature range
0.5 – 600 bar	$1.5 \times p_n - 2.5 \times p_n$	Gauge (0.5 – 50 bar), absolute (1 – 50 bar), sealed gauge (> 100 bar)	Operating temperature: -40/+125 °C, compensated: +20/+85 °C

Electrical connections: solder pads, plug (JST)
Special features: high chemical resistance - flush membrane, high long-term stability

METALLUX – PRESSURE SENSORS



CPS 2152

PRESSURE SENSOR CERAMIC



Technology	Dimensions	Supply voltage	Output signal
Thick-film on ceramic	Ø 15 x ca. 6.35 mm	3 – 30 V	1.5 – 3.5 mV/V

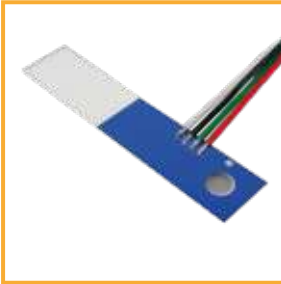
Pressure range p_n	Burst pressure	Pressure mode	Temperature range
1 – 50 bar	1.5 x p_n – 2.5 x p_n	Gauge (1 – 50 bar), absolute (1 – 50 bar)	-40/+85 °C, optional up to 125 °C

Electrical connections: solder pads, solder pins, flex

Special features: high chemical resistance, flush membrane, high long-term stability

CBB

FORCE SENSOR (BENDING BEAM)



Technology	Dimensions	Supply voltage	Output signal
Thick-film on ceramic	Customized	3 – 30 V	1.5 – 6 mV/V

Force range f_{nom}	Burst force	Measurement principle	Temperature range
0 – 5 N unmounted	> 1.5 F_{nom}	Application of force	-40/+85 °C

Electrical connections: solder pads, strands

Special features: customized, thick-film on stainless steel or FR4



METALLUX – PRESSURE SENSORS



SPS 1000 PRESSURE SENSOR MONOLITH STAINLESS STEEL



Technology	Dimensions	Supply voltage	Output signal
Thick-film on stainless steel	Ø 18 x 6.35 mm	3 – 30 V	1.5 – 3.5 mV/V

Pressure range p_n	Burst pressure	Pressure mode	Temperature range
10 – 1000 bar	Permissible overpressure: 1.5 x p_n , burst pressure: > 10 x p_n	Gauge	-40/+85°C, optional up to 125°C

Electrical connections: solder pads, solder pins, flex
Special features: high burst pressure at high pressure range

SPS 1000 Z PRESSURE SENSOR MONOLITH STAINLESS STEEL



Technology	Dimensions	Supply voltage	Output signal
Thick-film on stainless steel	Ø 18 mm x max. 12 mm without plug	5 V	0.5 – 4.5 V (ratiometric) 4 – 20 mA

Pressure range p_n	Burst pressure	Pressure mode	Temperature range
10 – 1000 bar	Permissible overpressure: 1.5 x p_n , burst pressure: > 10 x p_n	Gauge	-40/+85 °C, optional up to 125 °C

Electrical connections: solder pads, plug [JST]
Special features: high burst pressure at high pressure range



METALLUX – PRESSURE SENSORS



SPS 3003

PRESSURE SENSOR MONOLITH STAINLESS STEEL



Technology	Dimensions	Supply voltage	Output signal
Thick-film on stainless steel	SW22, G1/4", total height 24 mm	3 – 30 V	1.5 – 3.5 mV/V

Pressure range p_n	Burst pressure	Pressure mode	Temperature range
10 – 1000 bar	Permissible overpressure: $1.5 \times p_n$, burst pressure: $> 10 \times p_n$	Gauge	-40/+85 °C, optional up to 125 °C

Electrical connections: solder pads, solder pins, flex
Special features: integrated process connection, no O-ring seal required, high burst pressure at high pressure range, high chemical resistance
Option: Various mechanical steel designs available on request

SPS 3003 Z

PRESSURE SENSOR MONOLITH STAINLESS STEEL



Technology	Dimensions	Supply voltage	Output signal
Thick-film on stainless steel	SW22, G1/4", total height max. 30 mm	5 V	0.5 – 4.5 V [ratiometric] 4 – 20 mA

Pressure range p_n	Burst pressure	Pressure mode	Temperature range
10 – 1000 bar	Permissible overpressure: $1.5 \times p_n$, burst pressure: $> 10 \times p_n$	Gauge	-40/+85 °C, optional up to 125 °C

Electrical connections: solder pads, plug (JST)
Special features: integrated process connection, no O-ring seal required, high burst pressure at high pressure range, high chemical resistance
Option: Various mechanical steel designs available on request



www.metallux.de

Specifications are subject to change without notice.
© www.metallux.de 01/2020



METALLUX AG

Robert-Bosch-Straße 29
71397 Leutenbach-Nellmersbach
Germany

FON +49 (0)7195/59 80 - 0
FAX +49 (0)7195/59 80 - 300
E-mail: info@metallux.de

System Certification
to ISO 9001:2015