

# CONTACTLESS LINEAR MEMBRANE SENSOR MMP



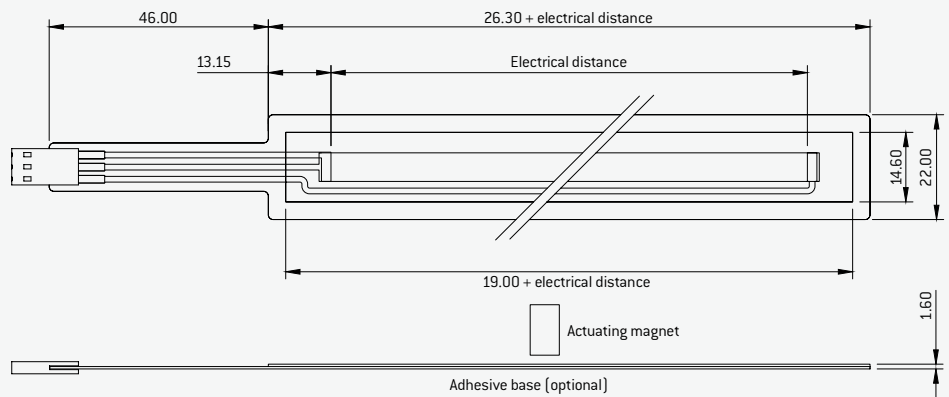
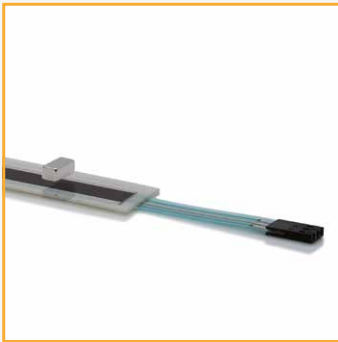
The technology of the MMP series is based on the MTP series. The linear, contactless Metallux membrane sensors can be used for position sensing in a wide range of applications. The contactless measurement is performed by means of a layer of metal foil integrated in the sensor and a magnet positioned at a set distance from the sensor.

## FEATURES

- Contactless magnetic coupling
- Flat design
- IP 65, electrical connection and plug excluded
- Long lifetime

## APPLICATIONS

- Linear position sensing, for instance in cylinders
- Servo systems
- Industrial applications



## ELECTRICAL SPECIFICATIONS

<b>Resistance range (Rn)</b>	2.5 kΩ/100 mm distance
<b>Resistance tolerance</b>	± 30 %
<b>Electrical distance</b>	50 – 500 mm
<b>Independent linearity</b>	± 2 % **
<b>Resolution</b>	< 0.1mm **
<b>Load resistance</b>	> 100* Rn
<b>Max. load current in case of fault</b>	5 mA
<b>Typical supply voltage</b>	5 VDC

Mechanical and electrical characteristics are customizable. Specifications are subject to change without notice. \* Others on request. \*\* Specifications may deviate according to temperature and installation conditions.

## MECHANICAL SPECIFICATIONS

<b>Lifetime</b>	50 million cycles
<b>Travel speed</b>	≤ 3 m/sec. *
<b>Cable connection</b>	L: 46 mm; W: 10.16 mm
<b>Max. measuring distance from magnet to sensor</b>	2 mm
<b>Type of mount</b>	Adhesive film

## AMBIENT CONDITIONS

<b>Operating temperature</b>	-10° C – +70° C **
<b>Protection class</b>	IP 65 according to DIN EN 60529, electrical connection and plug excluded

## MATERIALS

<b>Substrates</b>	PET, PEEK, FR4
-------------------	----------------

## ELECTRICAL CONNECTION

Female crimp contacts, Crimpflex solder pads\* (Poka Yoke)

## SAMPLE ORDER

Part no.	Type series	Resistance range	Elect. measuring range	Elect. connection
E090100100	MMP	2.5 K	100 mm	Female crimp contacts
H907040001	Block magnet 10 x 5 x 4 mm, 80° C			
H907040004	Block magnet 10 x 5 x 4 mm, 150° C			