

POTENTIOMETER ELEMENT FOR ROTARY POSITION SENSING



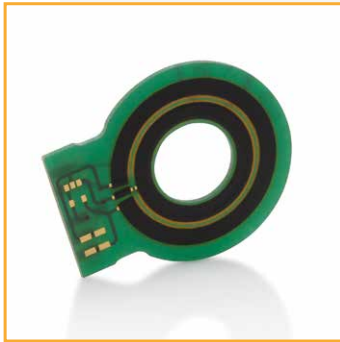
These Metallux potentiometer elements for rotary position sensing feature customised designs, efficient integration in existing installation spaces and a long lifetime. Linearisation with accuracy of up to $\pm 0.25\%$ is possible.

FEATURES

- Customised designs
- Different substrate materials available

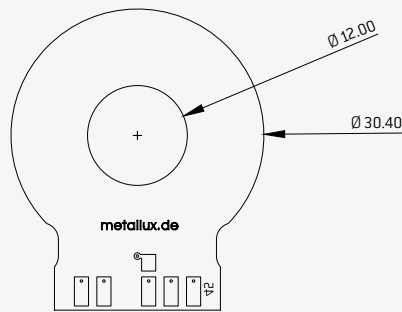
APPLICATIONS

- Rotary position sensing
- Automotive
- Industrial applications
- Aerospace

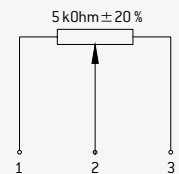
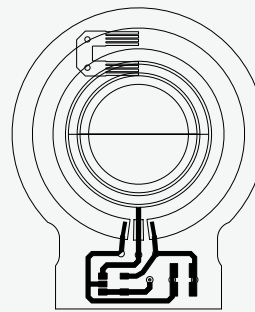


** showcase sample

View of the front



View of the back



ELECTRICAL SPECIFICATIONS

Resistance range (Rn)	5 kΩ *
Resistance tolerance	± 20 %
electrical angle	0° – 355° *
Independent linearity	± 2 % *, ± 0,25 % optional
Resolution	Analogue, almost infinite
Maximum wiper current	5 mA in case of malfunction
Typical supply voltage	3 – 30 VDC
Wiper load	> 100 x Rn

MECHANICAL SPECIFICATIONS

Lifetime	Up to 50 million cycles
Wiper	Metallux PC Board system with bimetal wiper

AMBIENT CONDITIONS

Operating temperature	-40° C – +125° on FR4-carrier
------------------------------	-------------------------------

MATERIALS

Substrates	FR4, FR5, Polymer, Ceramic, Polyimid
-------------------	--------------------------------------

Mechanical and electrical characteristics are customizable. Specifications are subject to change without notice. * Others on request.

SAMPLE ORDER

Part no.	Type series	Elect. measuring range	Elect. connection
E040200216	Potentiometer element, rotary	350°	Solder pads, cable optional
H90356002	Slider 2		